



European Service Support Group
Technical Information & Parts Supply



Service Bulletin SB167

SUBJECT: **Gear & Clutch Change.**
UNITS: **ALL Mid Size Hammers.**
DATE CODE RANGE: **ALL.**
ISSUED BY: **Martin Chadwick.**

The manufacturing process used to produce the Bevel Gear and Clutch SA changed from Machined to Cold Forged. The profiles of the Clutch Pinion & Gear teeth are different and consequently they are not interchangeable between the old & new.

On no account should the parts be mixed otherwise this will cause an increase in noise and vibration

New Service part numbers have been issued to cover this change.

New part numbers. **496367-00 Clutch SA.**
 496440-00 Service Kit Inc Clutch SA & Bevel Gear.

Old part numbers. **587279-01 Clutch SA & 329030-00 Bevel Gear.**

During testing a number of units were produced in Usti with the new parts, unfortunately date code information from manufacturing is not reliable enough to be used for positive identification purposes. Before making a repair to the Bevel Gear or Clutch SA check to verify the type of components that have been fitted.

Below are photographs showing the visible differences.

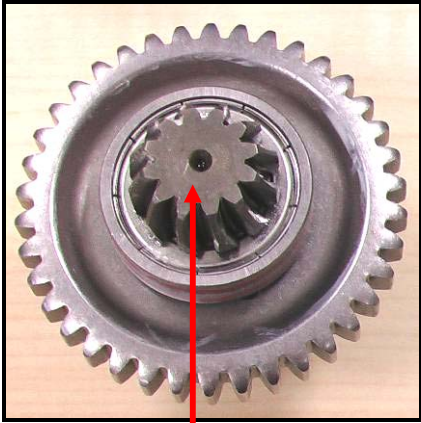
If the tool undergoing repair has the new parts fitted, and only requires a SA Clutch then order **496367-00 Clutch SA.**

If the Gear is required as well, or in isolation order the **496440-00 Service Kit.** The gear has not been set up on its own.

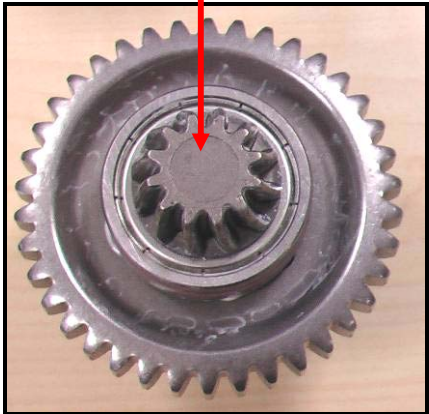
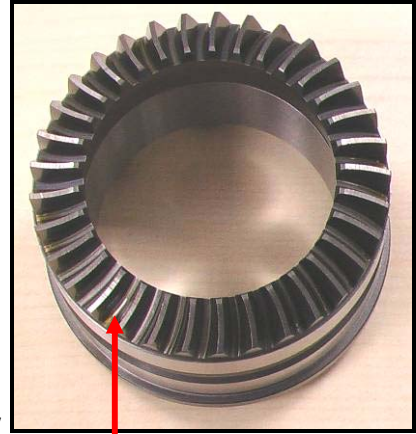
Alternatively, if the tool is fitted with the old parts you can continue to use these until existing stock has been exhausted then the **496440-00 Service Kit** will have to be fitted in all cases.

Units produced from **Week 1 2007** should be fitted with the new type parts, but confirm by visual inspection before ordering replacements.

Any units produced **before 2007** will have to be checked to see if the new parts have already been fitted during a previous repair then order accordingly.



Old type Clutch & Gear



New Type Clutch & Gear

